

SPECIALSTEELSTOCK^{CS}

QUALITY AVAILABILITY TECHNICAL SUPPORT

Ogni cosa fatta con passione
dà buoni frutti

Everything done with passion
bears good fruit



SPECIAL STEEL STOCK ^{CS}

4000 TONS IN STOCK
OF ROUND BARS AND PLATES



Oil & Gas

Pharmaceutic

Offshore

Waste & Water

Power & Energy

Military Equipment

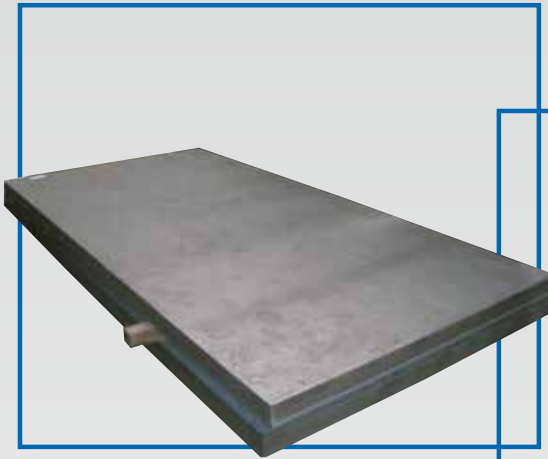
Chemical Industry

Pulp & Paper

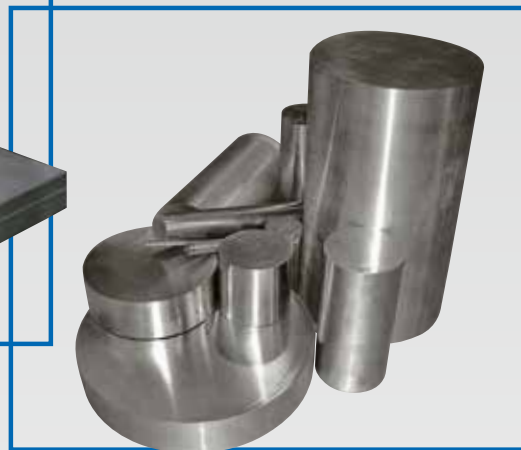
Desalination

SPECIAL STEEL STOCK

Certifications: Norsok - Nace - ASTM - EN - WN - PED - API 6A - API 6D
Test on request: X-RAY, DP, PMI, ULTRASONIC, CORROSION (G48 A/B or others)



LAMIERE: sp. da 2 a 100 mm
PLATES: thk. from 2 up to 100 mm



BARRE TONDE: da \varnothing 12 a 550 mm
ROUND BARS: from \varnothing 12 up to 550 mm

MATERIALE OFFERTO:

IN FORMATI COMMERCIALI, A MISURA O A DISEGNO.

TAGLIO BARRA TONDA: con sega a nastro fino a \varnothing 600 mm

TAGLIO LAMIERA: con waterjet, plasma o laser.

MATERIAL OFFERED:

IN STANDARD DIMENSIONS, CUT TO SIZE OR TO DRAWING.

ROUND BAR CUTTING: by band saw up to \varnothing 600 mm

PLATE CUTTING: by waterjet, high definition plasma or laser.

SU RICHIESTA - ON REQUEST:



PARTICOLARI TAGLIATI,
anche su disegno cliente
SHAPED PIECES,
also acc. to customer's drawing



TUBI SALDATI:
anche in accordo a ASTM A790
WELDED PIPES:
also according to ASTM A790



PARTICOLARI LAVORATI:
su disegno del cliente
MACHINED PIECES:
according to drawing

SPECIALSTEELSTOCK^{CS}

SERVIZI OFFERTI | OFFERED SERVICES



TAGLIO WATERJET E PLASMA HD
WATERJET AND HD PLASMA CUTTING



TAGLIO LASER TECNOLOGIA FIBRA FINO A SP. 20 MM
FIBER LASER CUTTING UP TO THK. 20 MM



TAGLIO CON SEGA FINO Ø 600 MM
SAW CUTTING UP TO Ø 600 MM



**PROVE DI LABORATORIO PER ANALISI
E CARATTERISTICHE**
**ANALYSES AND PROPERTIES
LAB TEST**



**CONTROLLO PMI DEL MATERIALE
CON CERTIFICATO**
**PMI TEST ON MATERIAL
(PLUS CERTIFICATE)**



IMBALLI
per qualsiasi tipo di trasporto,
anche ISPM 15
PACKING
for any kind of transport, also ISPM 15

SPECIAL STEEL STOCK

ROUND BARS - BARRE TONDE

DUPLEX S31803 - 1.4462 - X2CrNiMoN22.5.3 - F51 - S32205 - F60 up to \varnothing 550 mm
SUPER DUPLEX S32760 - 1.4501 - X2CrNiMoCuWN25.7.4 - F55 up to \varnothing 500 mm
SUPER DUPLEX S32750 - 1.4410 - X2CrNiMoN25.7.4 - F53 up to \varnothing 500 mm
AUSTENITIC S20910 - 1.3964 - X2CrNiMnMoNNb21.16.5.3 - XM19 SA/HR/HS up to \varnothing 400 mm
SUPER AUSTENITIC S31254 - 1.4547 - X1CrNiMoCuN20.18.7 - F44 up to \varnothing 400 mm
SUPER AUSTENITIC N08904 - 904L - 1.4539 - X1NiCrMoCu25.20.5 up to \varnothing 400 mm
17-4PH H1150D S17400 - 1.4542 - AISI 630 - X5CrNiCuNb 16-4 up to \varnothing 400 mm
ALLOY 625 N06625 - 2.4856 - NiCr22Mo9Nb up to \varnothing 400 mm
ALLOY 718 N07718 - 2.4668 - NiCr19NbMo up to \varnothing 400 mm
ALLOY 825 N08825 - 2.4858 - NiCr21Mo up to \varnothing 330 mm
ALLOY C22 N06022 - 2.4602 - NiCr21Mo14W up to \varnothing 250 mm
ALLOY C276 N10276 - 2.4819 - NiMo16Cr15W up to \varnothing 275 mm

PLATES - LAMIERE

DUPLEX S31803 - 1.4462 - X2CrNiMoN22.5.3 - S32205 up to thk.100 mm
SUPER DUPLEX S32760 - 1.4501 - X2CrNiMoCuWN25.7.4 up to thk.100 mm
SUPER DUPLEX S32750 - 1.4410 - X2CrNiMoN25.7.4 up to thk.100 mm
SUPER AUSTENITIC S31254 - 1.4547 - X1CrNiMoCuN20.18.7 - 254SMO up to thk.80 mm
SUPER AUSTENITIC N08904 - 904L - 1.4539 - X1NiCrMoCu25.20.5 up to thk.50 mm
ALLOY 625 N06625 - 2.4856 - NiCr22Mo9Nb up to thk. 75 mm
ALLOY 825 N08825 - 2.4858 - NiCr21Mo up to thk. 70 mm
ALLOY C22 N06022 - 2.4602 - NiCr21Mo14W up to thk. 50,8 mm
ALLOY C276 N10276 - 2.4819 - NiMo16Cr15W up to thk. 50,8 mm
ALLOY 600 N06600 - 2.4816 - Ni72Cr16Fe8 up to thk 15 mm
ALLOY 800H N08810 - 1.4876 - Ni32.5Cr21Fe up to thk 15 mm
ALLOY 330 N08330 - 1.4886 - X12NiCrSi35-16 up to thk 10 mm

Inoltre produzioni da acciaieria su specifiche richieste di qualità, quantità e dimensioni.
Furthermore special production for particular quantities and sizes.

SU RICHIESTA (nei materiali indicati) - ON REQUEST (in the stocked grades)

TUBO ELETTRONITTO - WELDED TUBE

Da lamiera, calandrati, calibrati e radiografati. Dimensioni da minimo sp.3 mm di spessore e \varnothing 88,9 mm.
Taken from plate, calendered, calibrated and radiographed. All dimensions from thk.3 mm and \varnothing 88,9 mm.

WELDED ELBOWS - CURVE SALDATE

Da lamiera stampata fino a 20" (\varnothing 508 mm) secondo ASTM A815 e ASTM403.
From plate, up to 20" and according to ASTM A815 and ASTM A403.

PARTICOLARI LAVORATI A DISEGNO

Flange, raccorderia e pezzi a disegno in materiali speciali.
Flanges, fittings and pieces according to drawing in special materials.

SALES DEPARTMENT



Linda Scortegagna



Lisa Dall'Alba



Marco Comberlato



Valentina Dalle Molle



Daniele Soffientini



Roberto Tirelli



Stock List ITA



Stock List ENG

SPECIALSTEELSTOCK^{CS}

QUALITY AVAILABILITY TECHNICAL SUPPORT



Web Site



Video Company

Headquarter: Via Lago Maggiore, 7
 Plates warehouse: Via Lago Maggiore, 5
 Long products warehouse: Via Lago Maggiore, 9-11
 36015 SCHIO (Vicenza) Italy
 ☎ ++39.0445.579826
 ✉ info@specialsteelstock.com
 🔗 www.linkedin.com/company/specialsteelstock
 VAT IT 00491490249
 Fully paid-up share capital € 1.000.000